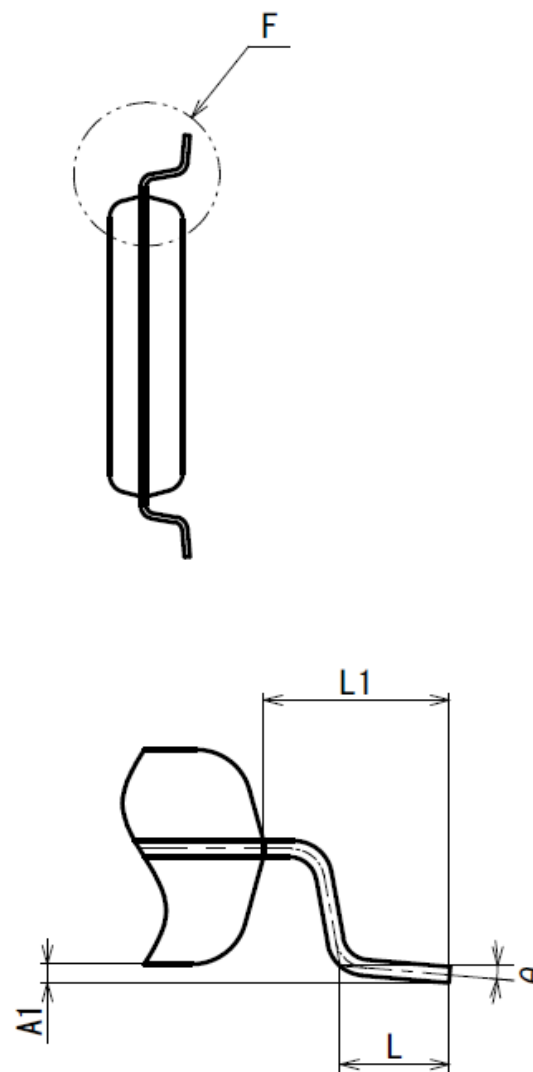
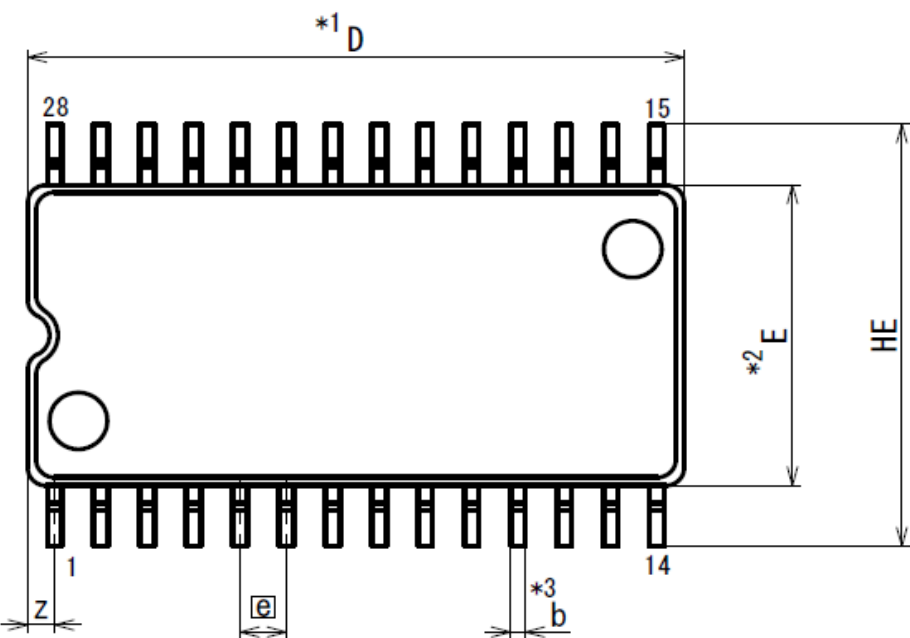
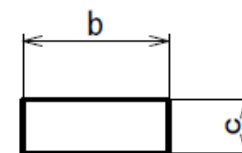


PKG TYPE	PKG CODE
SOP28T	—



Detail F

- NOTE)
1. DIMENSIONS "*1 (Nom)" AND "*2" DO NOT INCLUDE MOLD FLASH.
 2. DIMENSION "*3" DOES NOT INCLUDE TRIM OFFSET.



Terminal cross section
(Ni/Pd/Au plating)

Reference Symbol	Dimension in Millimeters		
	Min	Nom	Max
D	17.85	18.00	18.15
E	—	8.40	—
A2	—	2.00	2.1
A1	0.10	—	—
A	—	—	2.4
b	0.32	0.40	0.48
c	0.13	0.15	0.17
θ	0°	—	8°
HE	11.50	11.80	12.10
e	1.17	1.27	1.37
Z	—	—	1.12
L	0.80	1.00	1.20
L1	—	1.70	—